

Outbreak Involving Produce

State Perspective

Foodborne Illness Outbreaks Involving Produce





Notifications of an Incident

- Where could notification originate?
- Who would make the notification?

Where Could Notifications Originate?

- Rapid Response Team
- State or local health department
- FDA



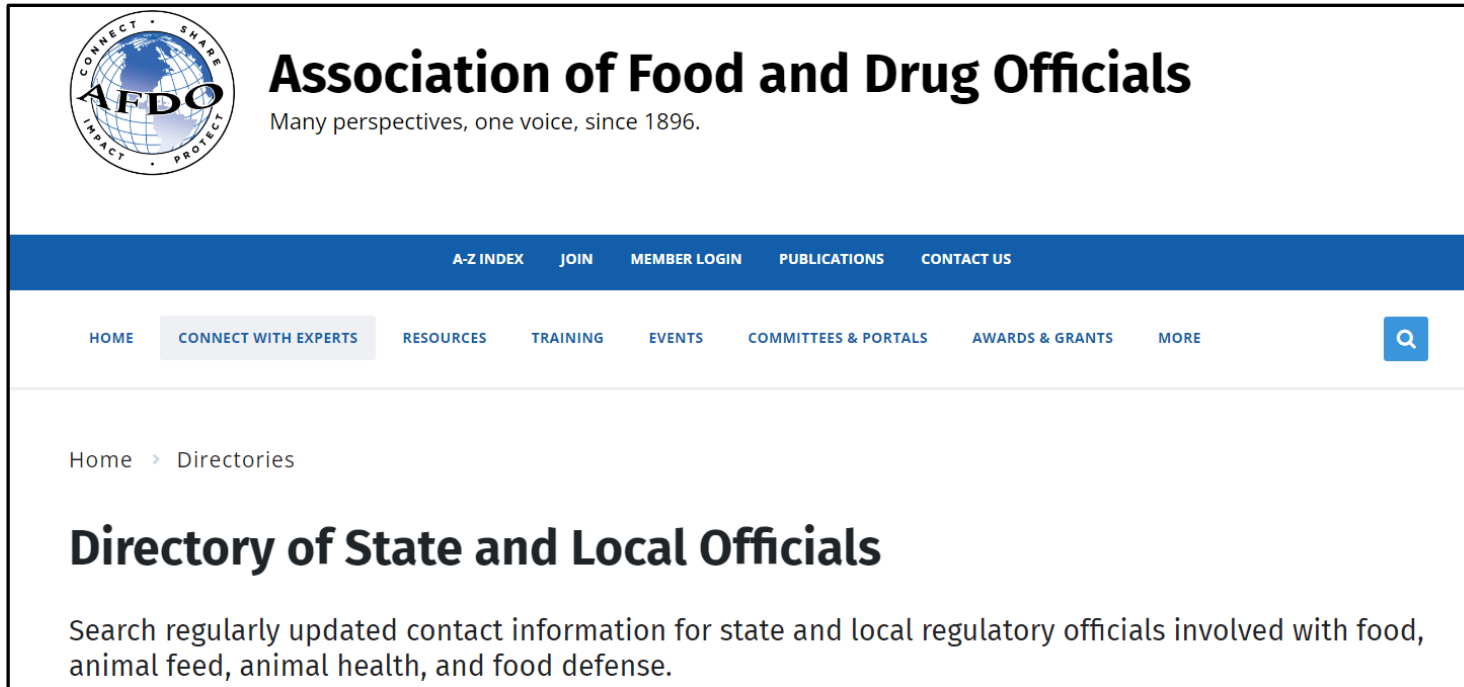


Who Would Make the Notification?

- Department of Health (DOH)
- Manufactured Food Program
- Rapid Response Team or Emergency Response Team
- FDA Division State Liaison
- FDA Emergency Response Coordinator

How to Find Contacts?

<https://www.afdo.org/directories/dslo/>



The screenshot displays the website for the Association of Food and Drug Officials (AFDO). At the top left is the AFDO logo, which features a globe and the text "CONNECT • SHARE" at the top and "IMPACT • PROTECT" at the bottom. To the right of the logo, the text reads "Association of Food and Drug Officials" and "Many perspectives, one voice, since 1896." Below this is a blue navigation bar with links for "A-Z INDEX", "JOIN", "MEMBER LOGIN", "PUBLICATIONS", and "CONTACT US". Underneath the blue bar is a white navigation bar with links for "HOME", "CONNECT WITH EXPERTS" (highlighted), "RESOURCES", "TRAINING", "EVENTS", "COMMITTEES & PORTALS", "AWARDS & GRANTS", and "MORE". A search icon is located on the right side of this bar. Below the navigation bars, the breadcrumb "Home > Directories" is shown. The main heading is "Directory of State and Local Officials", followed by a description: "Search regularly updated contact information for state and local regulatory officials involved with food, animal feed, animal health, and food defense."



When Would Produce be Involved?

- When notified there is a signal for an FBI involving produce
- When source of FBI is determined to be produce
- When there are calls regarding the incident involving produce

What Should the Produce Program Do?

- Notify the FDA PSN
- Conduct an investigation
- Coordinate traceback at the farm





FDA CORE

FEDERAL COORDINATION OF MULTISTATE OUTBREAKS

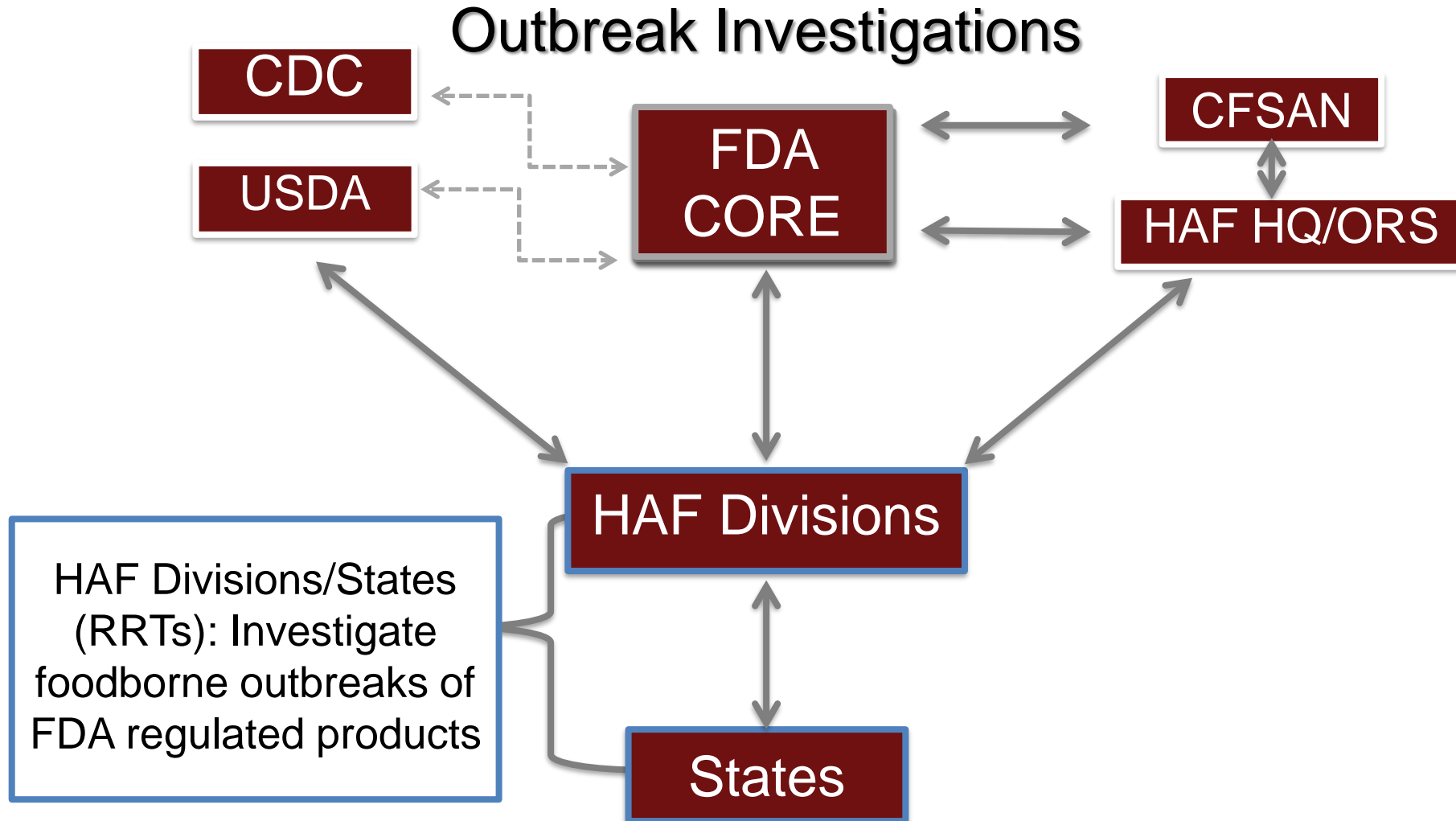
FEDERAL COORDINATION OF MULTISTATE OUTBREAKS



- Primary Federal Offices for Coordination:
 - CDC: Outbreak Response and Prevention Branch
 - FDA: Coordinated Outbreak Response and Evaluation Network (CORE)
 - USDA: Food Safety and Inspection Service (FSIS), Applied Epidemiology Staff

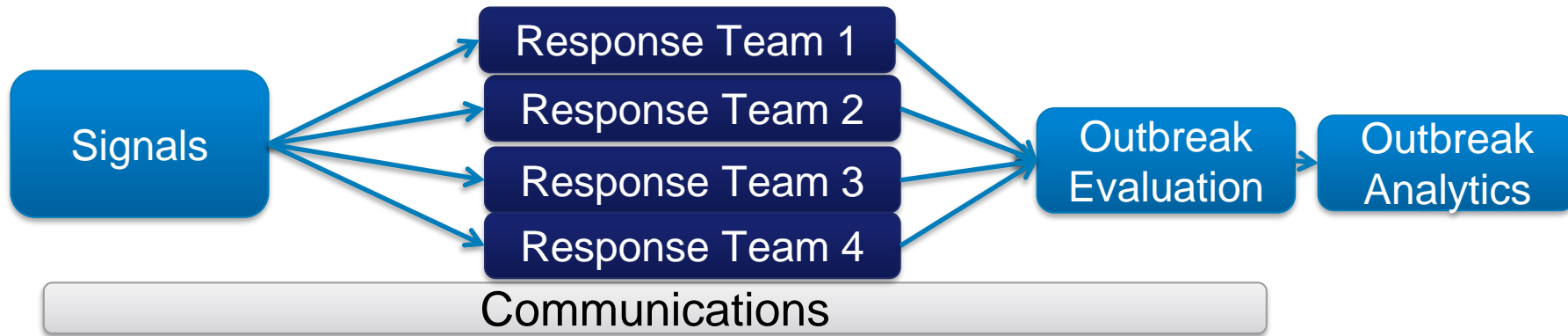


PROCESSES USED FOR FEDERAL COORDINATION

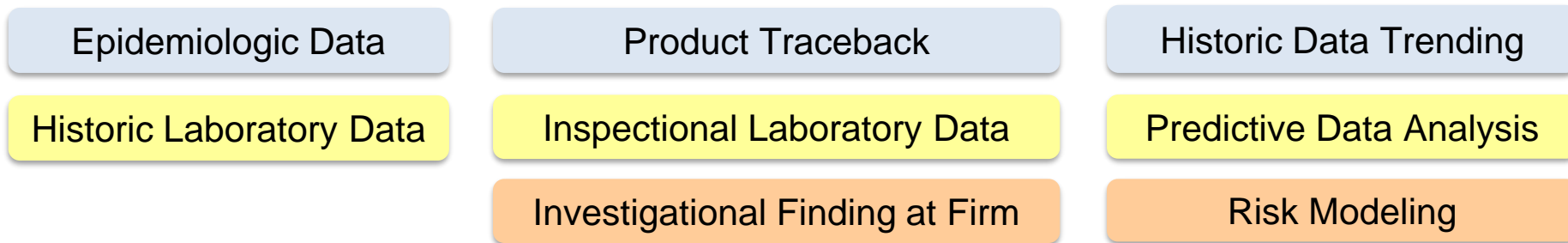




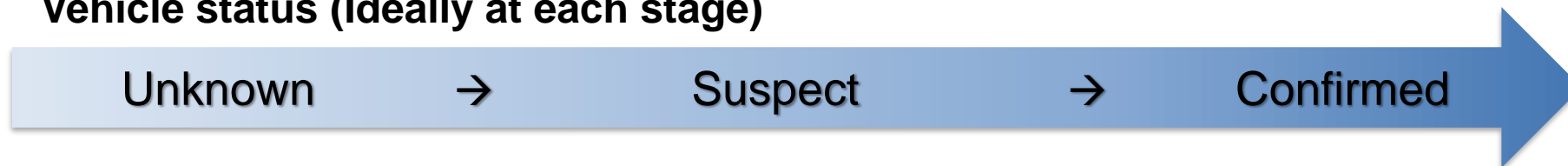
CORE: INCIDENT MOVEMENT



Types of evidence gathered at each stage

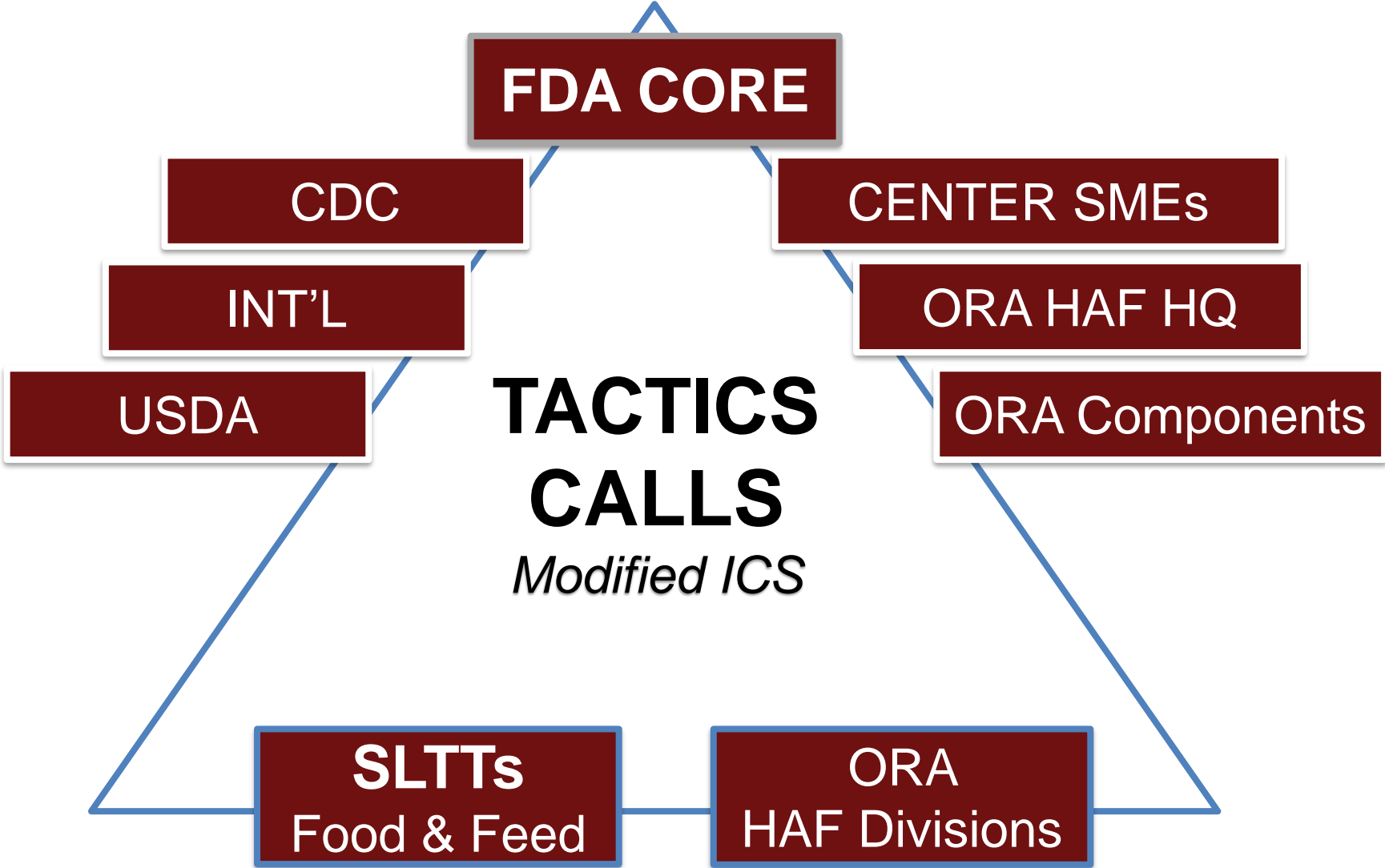


Vehicle status (Ideally at each stage)



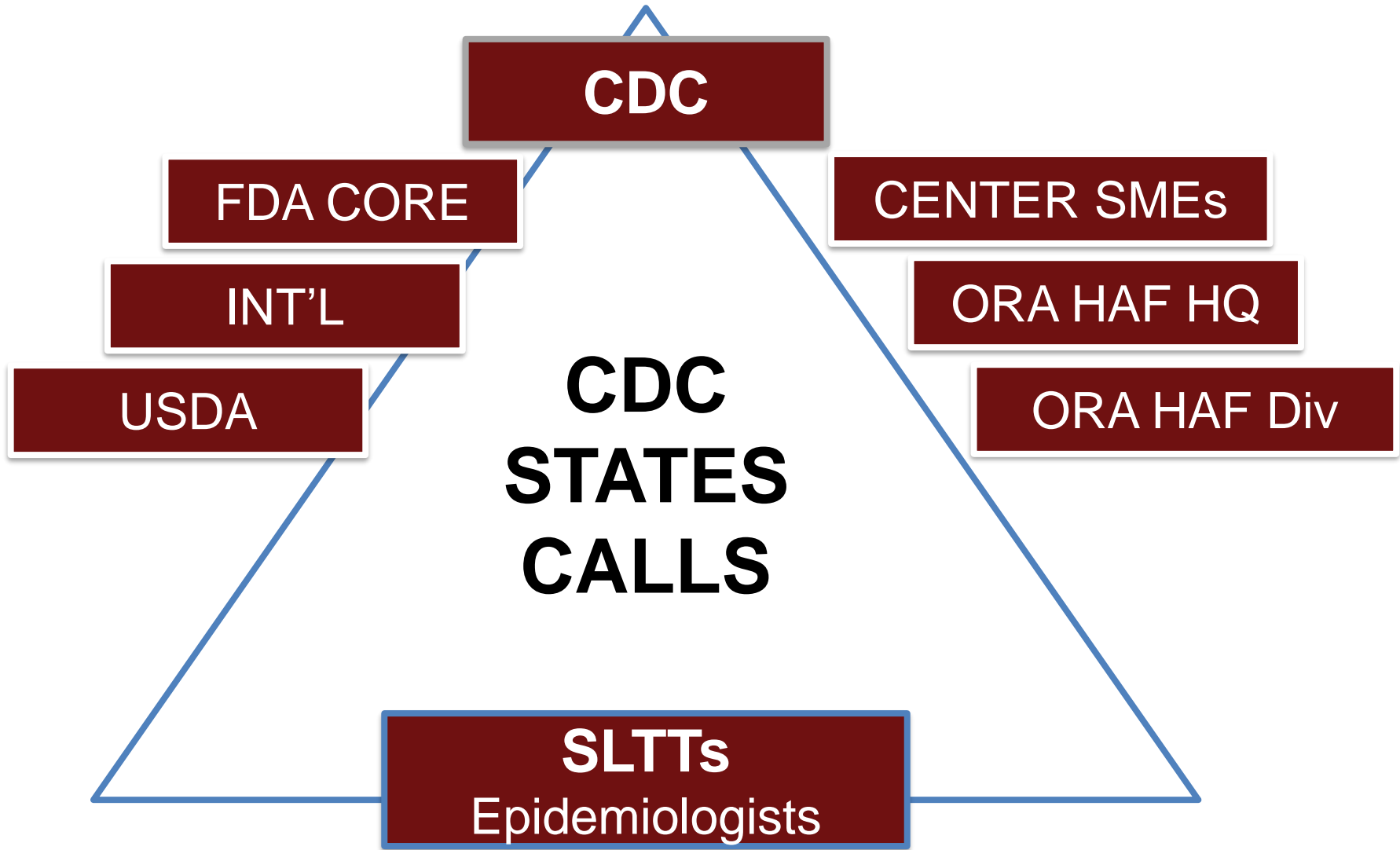


TACTICS CALLS



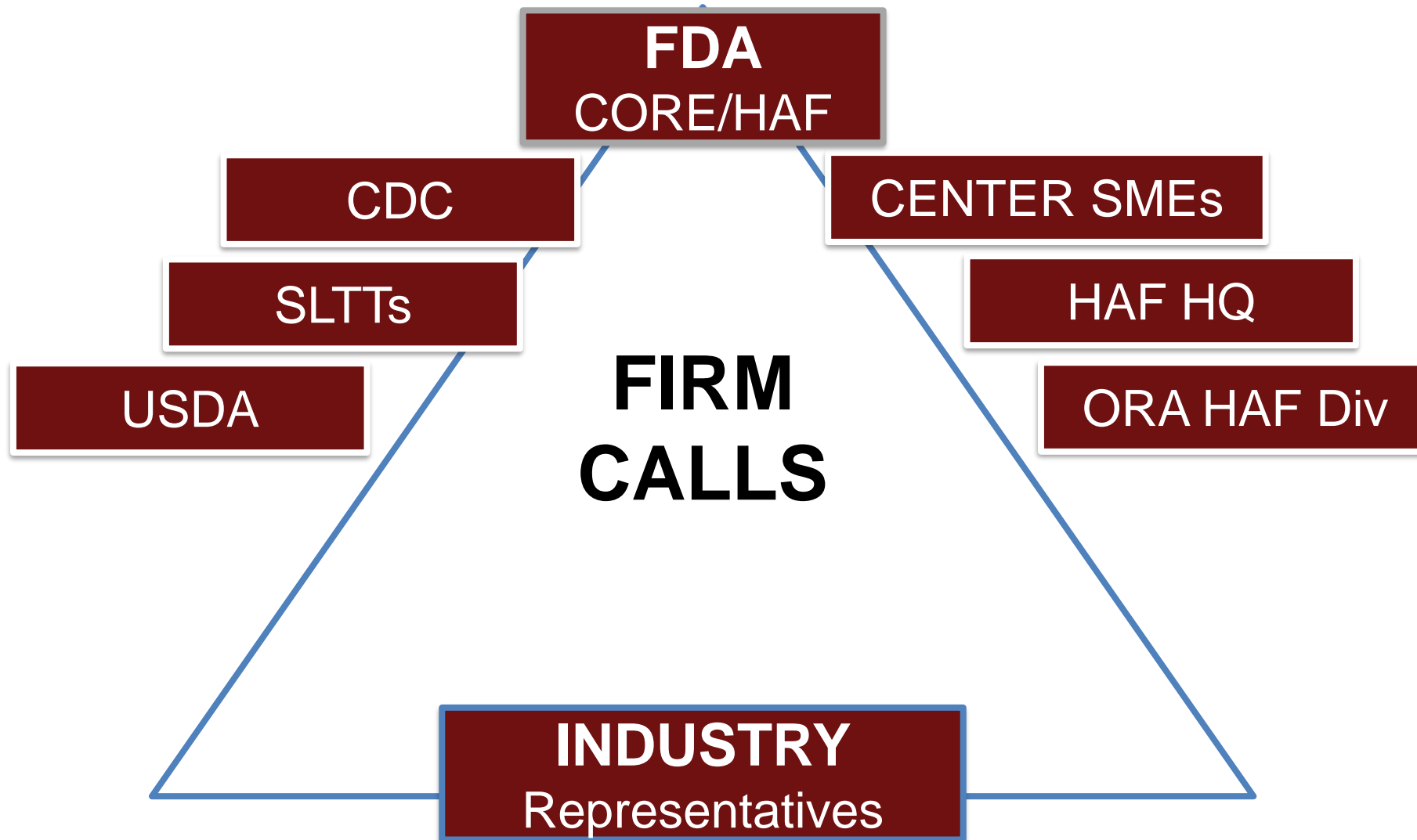


CDC STATES CALLS





FDA FIRM CALLS



QUESTIONS?





Nicole Clausen

Senior Food Program Expert
Office of Regulatory Affairs
Office of Human and Animal Foods

Nicole.clausen@fda.hhs.gov

Breakout Activities

Foodborne Illness Outbreaks Activity





Activity Instructions

- Select a scribe for each of the discussion sessions.
- Select someone to report out from each table for each of the sessions.
- The table group will review and discuss each of the questions allowing all to participate.
- Records answer(s) which can be reported out.
- Reporter will provide group results and provide additional details as background.



1. Emergency Response

- a. Is your organization part of an Emergency Response Team? Which agency is the lead and coordinates foodborne illnesses, including produce, in your state?
- b. Are there protocols in place for collaboration with other agencies/entities within your jurisdiction in a food emergency event?
- c. Which agency has the lead for epidemiology for a foodborne illness investigation that involves a produce item?
- d. Which agency typically contacts your program when there is an initial report of a foodborne illness event involving produce?
- e. What organizations, agencies, and programs should be part of an Emergency Response Team involving the implicated produce in commerce.
- f. Why would you want to have someone from extension or academia be a partner with produce on the Emergency Response Team when produce is involved?
- g. What is the importance of a 20.88 or credentialing when an event occurs?



2. Traceback / Sampling

- a. When a traceback of the suspected produce item is required, does your program have procedures in place to conduct a traceback?
- b. What should be part of this procedure plan?
- c. Do you have written information to provide to the farm to help clarify and expedite what is needed and the steps for the traceback?
- d. How would you disseminate the traceback information you receive to the Emergency Response Team in your state?
- e. If sampling of produce is needed for cause on the farm, does your produce program have the authority to take samples? If no, which program/agency would conduct the sampling?



3. Industry and Public Notification

- a. When produce from a specific farm is suspected as a vehicle of contamination, what mechanisms do you use/have in place to alert the farm/industry?
- b. What information is shared with the farm and by whom?
- c. When should communication take place with the farm?
- d. What mechanisms are in place in your agency to alert the public?
- e. Who would be the specific state agency to issue the public notification?
- f. What information should your produce program need to be prepared to answer questions from consumers, associations, or other stakeholders?



4. Individual Activity

- a. What is your most important take away from today's discussion about outbreaks.
- b. What information have you realized you need in your program to make informed decisions during a foodborne illness outbreak incident involving produce?
- c. Thinking about this activity, what are two things your program should review/develop in your emergency response procedures for foodborne illness outbreaks?
- d. What top three action items will you take back to your program/organization to ensure best management of a foodborne illness outbreak based upon what you have learned from this exercise?

